



BULLETIN 1.

3rd South East European Orienteering Championships For Youth, Juniors and Elite

www.seeoc2013.fro.ro

Calimanesti - Valcea, Romania
04-08th September 2013

ORGANISING COMMITTEE:

Event Director:

Minoiu Emilian

Secretary:

Stupu Anca

Technical Director:

Rosca Dionisie

Logistic Director:

Rosca Erika/Minoiu Veronica

National Controller:

Gheorghe Dinu

IOF EVENT ADVISER:

Todor Pedev, BUL

I. PRELIMINARY EVENT PROGRAMME:

4th September, Wednesday

Arrival, registration.

UNTIL 21:00 – Arrival, registration

14:00 – 19:00 Model event

20:00 – Team leaders meeting, Event Center

5th September, Thursday, WRE

UNTIL 12:00 – Arrival, registration

16:00 – Sprint

19:00 – SEEOC Official Opening and Prize giving ceremony Sprint

21:00 – Team leaders meeting , Event Center

6th September, Friday, WRE

10:00 – Long Distance

18:00 – Prize giving-ceremony Long Distance, Event Center

19:00 – Team leaders meeting, Event Center

20:00 – SEEOWG meeting 1st session, Event Center

7th September, Saturday, WRE

10:00 – Middle Distance

18:00 – Prize giving-ceremony Middle Distance, Event Center

19:00 – Team leaders meeting, Event Center

20:00 – SEEOWG meeting 2nd session, Event Center

8th September, Sunday

09:30 – Relay

14:30 – Prize giving and Closing ceremony

II. CLASSES

According to SEEOC Rules

Individual events and Relay: M16, 18, 20, 21. Women16, 18, 20, 21

III. ENTRY FEE

According to SEEOC Rules, 20 EUR per competitor for all races

IV. PARTICIPATION

According to the SEEOC Rules !

Competitors representing member Federations of the IOF, defined by the International Olympic Committee as belonging to the South East European continent, can compete in SEEOC.

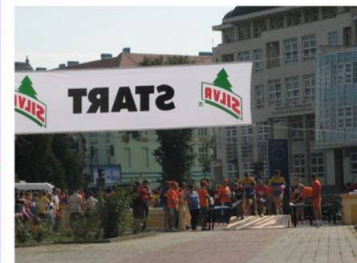
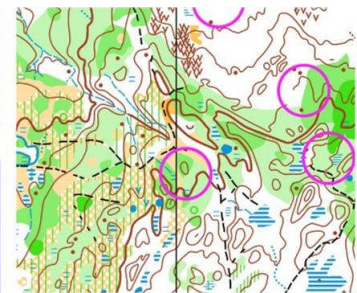
At the moment this Bulletin is published May 2012, the following countries are eligible for official participation: Bulgaria, Croatia, Cyprus, Greece, Italy, Macedonia, Moldova, Montenegro, Romania, Serbia and Turkey.

Participants from a country outside the South East European region, can participate in SEEOC open events, but will not be eligible for South East European titles, medals or diplomas. This start will be organized as an open event, 15 minutes after last official competitor start in each class.

In the individual events a Federation may enter a maximum of 4 runners in each class. In the relay a Federation may enter one team each consisting of 3 competitors. Incomplete teams and teams with runners from more than one Federation are not allowed. Under no circumstances may persons other than entered competitors participate in the competition.

V. PUNCHING SYSTEM

SPORT ident electronic punching system will be used in all races. You can rent SI card from the organizers 3 EUR per start. 40 EUR if lost rented SI card. Please, appoint your SI Card number in the Event Entry Form.



VI. MAPS AND TERRAINS

Maps	Terrain
<p>Sprint: Scale 1:4000, Contour: 2,5m According to ISSOM Map Maker: Rosca Dionisie</p>	<p>City and park zone.</p>
<p>Long distance: Scale 1:15000, Contour: 5m According to ISOM, Map Makers: Rosca Dionisie, Cotirta Marian</p>	<p>Terrain at 300 m above sea level. Moderately steep to steep hills up to 160 m height. Terrain with a lot of micro contours. Vegetation mainly beech spruce forest, but there are forests and open vegetation. Some undergrowth and small marshes. Runnability mostly very good, but reduced in some places due to denser vegetation. Visibility very good, but limited in denser areas. Medium density of paths and trails.</p>
<p>Middle distance: Scale 1:10000, Contour: 5m According to ISOM Map Makers: Cotirta Marian, Rosca Dionisie</p>	<p>Terrain at 300 m above sea level. Moderately steep to steep hills up to 160 m height. Terrain with a lot of micro contours. Vegetation mainly beech spruce forest, but there are forests and open vegetation. Some undergrowth and small marshes. Runnability mostly very good, but reduced in some places due to denser vegetation. Visibility very good, but limited in denser areas. Medium density of paths and trails.</p>
<p>Relay: Scale 1:10000, Contour: 5m According to ISOM Map Makers: Rosca Dionisie</p>	<p>Terrain at 300 m above sea level. Moderately steep to steep hills up to 160 m height. Terrain with a lot of micro contours. Vegetation mainly beech spruce forest, but there are forests and open vegetation. Some undergrowth and small marshes. Runnability mostly very good, but reduced in some places due to denser vegetation. Visibility very good, but limited in denser areas. Medium density of paths and trails.</p>

VII. ACCOMMODATION

Various hotels and hostels in Calimanesti-Caciulata, from 3 star hotels to school lodge possibilities, with good capacities. More information about accommodation and prices in Bulletin nr 2.

Accommodation, transport, entry fees

Accommodation: there are a lot of accommodation possibilities around Ramnicu Valcea: Calimanesti - 18 Km, Olanesti - 17 km, Govora – 18 km, Ocnele Mari - 6 Km.

Accommodation types: Youth centers - Calimanesti and Ramnicu Valcea (rooms with 2 or 3 beds), Hotels (2 ** or 3 ***), Pensions.
The prices are between 7 and 20 euros/night.

Meals: at the hotels restaurants starting from 7 euros/day depending on teams preferences.

Transportation: distances from the competition center to the competition areas are between 17 and 35 km.

Entry fees: according to the South East European Orienteering Championship regulation



7 | South East European Orienteering Championships

VIII. TRANSPORTATION

Road distances to Calimanesti:

Bucharest ROU: 170km

Belgrade SRB: 465km

Sofia BUL: 387km (via Oryahovo BG), 430km(via Vidin BG), 560km(Ruse BG-Ghimpati RO)

Zagreb CRO: 906m (via Belgrade)

Podgorica MNE: 926km

Skopje MKD: 620km

Istanbul TUR: 800km

Athens GRE: 1200km, Thessaloniki 866km (via Sofia)

Sarajevo BIH: 780km

Trieste ITA: 1100km (via Belgrad), 1200km (via Budapest)

Chisinau MD: 600km (via Brasov), 630km (via Ploiesti)

Cernauti MD: 560km

You can contact us for the special team transfer from Bucharest, Sibiu, Craiova to Valcea if you need.

Nearest international airports:

Bucharest, 195 km from Rm. Vâlcea

Sibiu, 115 km from Rm. Vâlcea

Craiova, 125 km from Rm. Vâlcea

Bus:

The transfer from the airport to Ramnicu Valcea could be arranged also by the organizers upon request. Also cars can be rented from the airport.

Other possibilities:

There are a lot of bus companies operating from Bucharest to Ramnicu Valcea.

It takes 2,5-3 hours to Calimanesti.

The ticket price in 2012 is around 8 € one way.

Local transport to Events

If necessary, organizers can provide transport to the competition, with transportation fee.

Teams can use their own transport from accommodation to the events, but at their own responsibility.

IX. TRAINING POSSIBILITIES

Those willing to train, have the chance of experiencing the terrain characteristics between the 3rd and 4rd of September, during the competition “Grand Prix Romania”.

More information you can find at our website: www.seeoc2013.fro.ro

X. EVENT CENTER

Călimănești. Exact place will be announced later. Calimanesti is 18 km from Ramnicu Valcea.

XI. EMBARGOED AREAS

You can see the embargoed areas at this link: www.seeoc2013.fro.ro

The city center of Ramnicu Valcea is not restricted by embargo, but it is prohibited to have trainings in the city center!

Any violation of entering embargo area for visiting or training shall be notified at once to the organizer: info@fro.ro

XII. INFORMATION, ENTRIES, ORGANISERS CONTACTS

Contact person: Emilian Minoiu - Event Director

Email: eminoiu@yahoo.co.uk, seeoc2013@yahoo.com,

Tel: +40751181435

www.seeoc2013.fro.ro

XIII. OTHER USEFUL INFORMATION

Bulletin no. 2 will be issued at the end of August 2012.

WELCOME TO ROMANIA!

**WELCOME TO THE 3rd SOUTH EAST EUROPEAN ORIENTEERING
CHAMPIONSHIPS!**

For Youth, Juniors, Elite and Masters