

## Oltenia Trophy, 30<sup>th</sup> edition

## Orienteering National Championships

# *Invitation*



Federația Română  
de Orientare



Primăria Târgu Jiu



Palatul Copiilor  
Târgu Jiu



Poarta Sărutului



## Targu Jiu, Gorj county

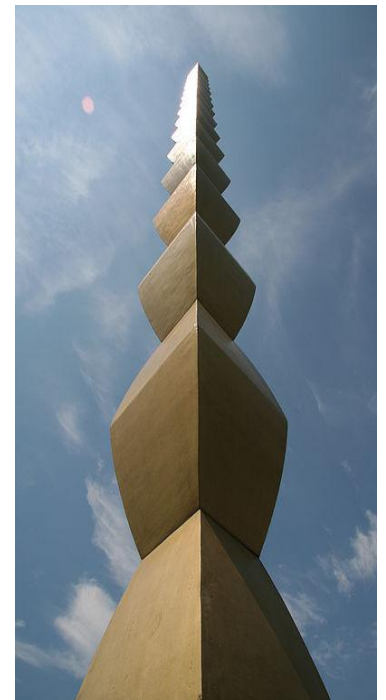
The city is situated in the geographic area of Getic Sub Carpathians, between Parang and Valcan Mountains at north and Bran Hill at south. It lays on 13 km from north to south and 10km from east to west on both sides of Jiu River.

The development of Tg-Jiu city was influenced by the fact that it was situated on the cross of many important roads (through Craiova, Ramnicu Valcea, Drobeta Turnu Severin, Petrosani).

The climate is temperate continental.

Tg-Jiu city takes its name by the river that crosses it. On this location there was an ancient dacic village. The first documented remark about the city is from 1406 by the name of "Jiul"

The heroine Ecaterina Teodoroiu was born of this county. She died defending Romanian land in the World War I. On her memory and on the other heroes that gave their lives for the country in 1937, under Constantin Brancusi coordination, a monumental park was built. This park is famous because it has some of the most highly appreciated Brancusi works.



**PRIMĂRIA MUNICIPIULUI TÂRGU-JIU**

**ORAȘUL LUI BRÂNCUȘI**

**ORAȘUL ISTORIEI**

**ORAȘUL CULTURII**

**TÂRGU-JIU, jud. GORJ, B-dul Constantin Brâncuși, nr. 19**  
tel: 0253-213317, fax: 0253-215882, e-mail: [primaria.targujiu@xnet.ro](mailto:primaria.targujiu@xnet.ro)  
web: [www.targujiu.ro](http://www.targujiu.ro)



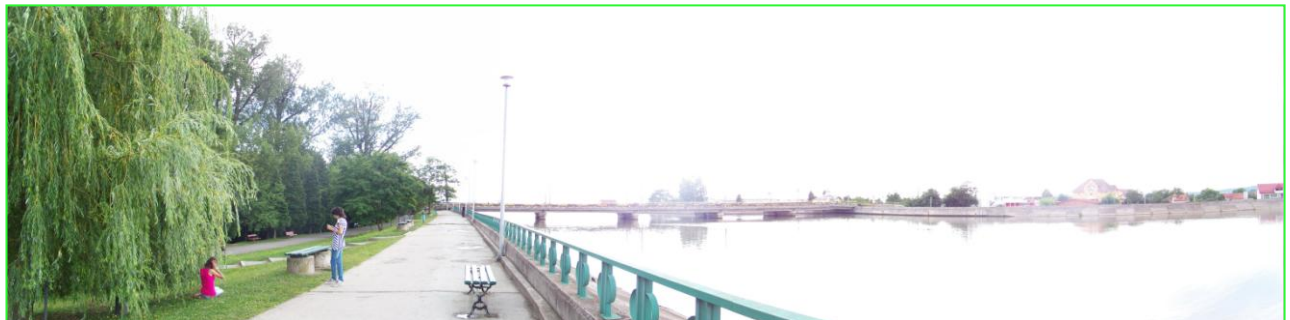
## ***Organizers:***

Romanian Orienteering Federation and Eco Sport Club in partnership with  
Targu Jiu city hall  
CS Pandurii Targu-Jiu  
Sport and Youth Gorj county committee  
Children Palace from Targu-Jiu



## ***Honor Committee:***

Dr. Ing, Florin Carciumaru – Targu-Jiu Mayer  
Prof. Viorica Dima – CS Pandurii Targu-Jiu president  
Prof. Pompiliu Ciolacu – Children Palace president



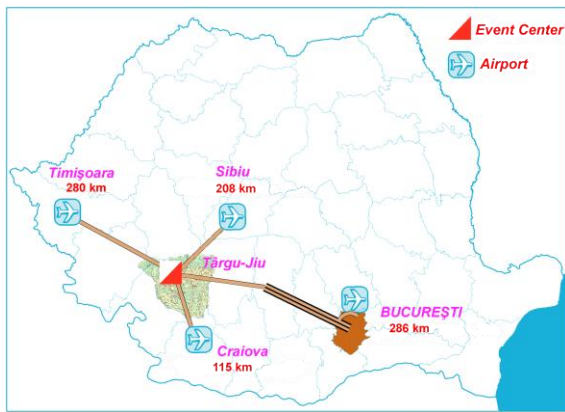
## ***Organizing Committee:***

President: prof. Constantin Alexandrescu – FRO president  
Vice-president: Marcu Adrian  
Technical director: Rosca Dionisie  
IOF Event Advisor: Ionescu Serban  
Secretary:  
Validation, festivities: Sterea Vasile  
Sport Ident system: Marcel Cristea, Neagu George  
Course setters: Popa Ciprian, Chiriac Romica, Rosca Erika, Marcu Adrian  
National Controller: Rosca Dionisie, Chiriac Romica, Popa Ciprian  
Mass-media: Bogdan Poenar

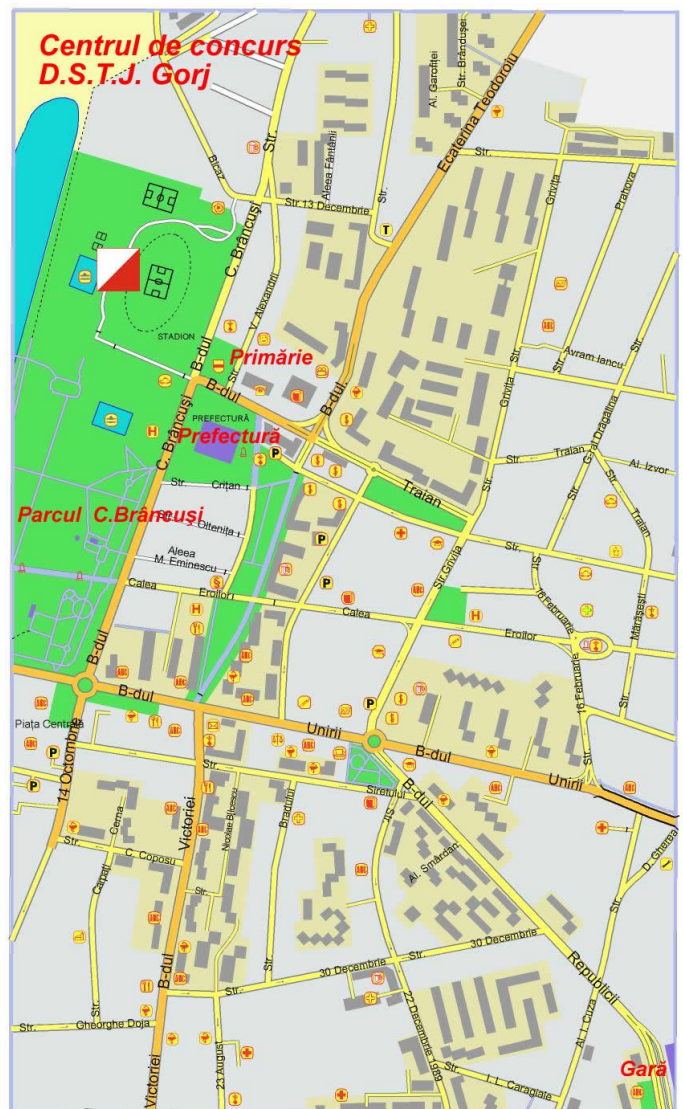
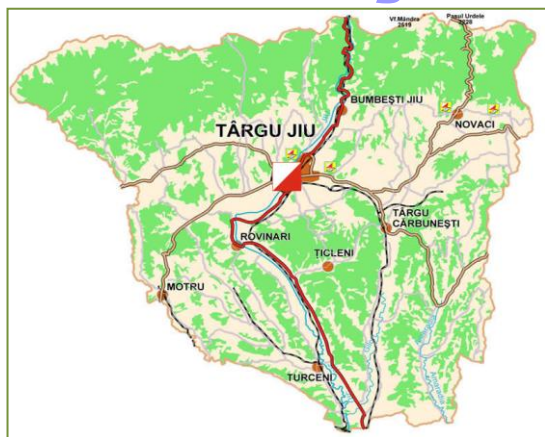


**Competition Center:  
Hotel Sport – Tg-Jiu “Municipal” Stadium**

**România**



**Jud. Gorj**



**Competition Area:**

Detailed map of the competition area will be publish with Bulletin no.3, on the validation.  
Approximate total distance from Competition Center to all competition areas (Md, LD, Sprint and Relay) is approx. 100km.



## **Program:**

Wednesday, August 31<sup>st</sup>: 15h00 – opening of Competition Center  
18h00 – 20h00 – Validation

Thursday, September 1<sup>st</sup>: 9h30 – 13h30 – Validation  
17h00 – First start in *Sprint* competition  
17h45 – Cultural program  
Prize winning ceremony will be at the Finnish area.

Friday, September 2<sup>nd</sup>: 10h00 – First start in *Middle Distance*

Saturday, September 3<sup>rd</sup>: 10h00 – First start in *Long Distance* – WRE  
Prize giving ceremony (Sp+MD+LD) at Finnish area

Sunday, September 4<sup>th</sup>: 09h30 – Start in Relay (block start)  
14h00 – Prize giving ceremony – at the Finnish area

## **Comments (Mentions):**

**Final registration term: August 25<sup>th</sup> 2011**

**Start list drawing : August 26<sup>h</sup> 2011**

Validation: according to validation program.

## **Equipment:**

Sprint: 85% of the course is on the asphalt, so normal running shoes (without spikes) are recommended

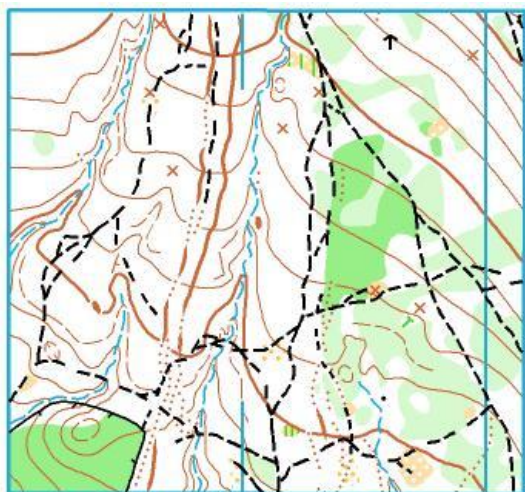
MD, LD, Relay: according to each stage description (see “Maps” chapter)

## **Categories:**

W/M20,21 years – “Butterfly” type courses. In these 2 categories the courses will be identical for National Championships.

## Prizes:

- At Oltenia Trophy – prizes will be awarded for the first 3 of each category . The results will be the cumulation of Sprint, MD and LD times.



## Maps / Competition terrain:

The maps are new and made in 2010/2011

- Sprint: 1:4000/5m ;
- Long Distance: 1:10 000/5m and 1:15 000/5m

Hilly terrain, alternating areas with clear and detailed contours, rich path net, leaf-bearing forest with spots of thick vegetation and very clear areas, medium visibility;

- Middle Distance: 1:10 000/5m

Hilly terrain, alternating areas with clear and detailed contours, medium visibility

- Relay: 1:10 000/5m

Hilly terrain, with a lot of detailed contours, leaf-bearing forest, ground vegetation, medium visibility



**SPORTIdent system is used for timing.**

## Categories

<b>Sprint:</b>	W/M – 14, 16, 18, 21, 40, 55, Open Tehnic, Family**
<b>Long Distance:</b>	W/M – 10***, 12, 14, 16, 18, 20, 35, 40, ...75, Open Tehnic, Open Beginners, Family**
<b>Long Distance-WRE</b>	W/M – 21
<b>Middle Distance:</b>	W/M – 10***, 12, 14, 16, 18, 20, 21, 35, 40, ...75, Open Tehnic, Open Beginners, Family **
<b>Relay:</b>	W/M – 14, 18, 21, 35 , minimum 135 years.

Note: \*\* Team formed by family members

\*\*\* Marked course for W/M 10

## Entry fees

<b>0 EUR</b>	W/M – 10, 12, Family
<b>15 EUR / 4 day/pers.</b>	W/M – 12, 14, 60, ....75, Open Beginners,
<b>20 EUR / 4 day/pers.</b>	W/M – 16, 18, 20, 35, 40, 50, 55, Open Tehnic

## Accommodation:

Type A, 8-10 EUR /day/pers. – rooms with 2 - 3 beds, WC, shower and TV

Type B, 5 EUR /day/pers. – rooms with 4-6 beds, WC and shower

Type C, 4 EUR /day/pers. – rooms with 6-8 beds, shared WC and showers (on the same floor).

Type D – own tents ( in the D.T.S.J. Gorj enclosure).

Type E – hard floor with own equipment

## Meals:

Type 1, Restaurant 10-12 EUR/day/pers

Type 2, School canteen 7-10 EUR /day/pers

Type 3, Catering – 4 EUR for lunch at the competition area

There is possible to have lunch at the competition area for MD, LD and Relay.

**Transportation** – competitors' own responsibility

## Additional information: Roșca Dionisie

*Email: [ecosport.ro@gmail.com](mailto:ecosport.ro@gmail.com), [www.open-orienteeing.ro](http://www.open-orienteeing.ro), [www.fro.ro](http://www.fro.ro)*

**Registration: [online](#)** (recommended)

[www.fro.ro/calendar\\_evenimente/1septembrie/buletinul2b/online](http://www.fro.ro/calendar_evenimente/1septembrie/buletinul2b/online)

or

via email to: [marcel\\_cristea75@hotmail](mailto:marcel_cristea75@hotmail.com) (specifying competion) or by fax: + **40 350 819 052** (specifying competion).

Autoritatea Națională  
pentru Sport și Tineret



Prmăria  
Târgu Jiu



C.S.Pandurii  
Târgu Jiu



Palatul Copiilor  
Târgu Jiu



Federația Română  
de Orientare



*You are welcome to come!*